

IT'S THE *REAL THINGS* IN LIFE THAT MATTER



*The*

Complete

*Guide*

to

Solid

Fuel

Heating



SOLID FUEL ASSOCIATION



Why

Choose

Solid

Fuel ?

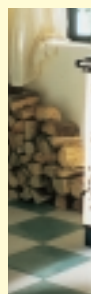
## VERSATILE AND SECURE

It's the real things in life that matter:

Walk into a room where a real coal fire is glowing gently in the hearth and you are immediately drawn to it. There really is nothing like it. A coal fire helps to make your house into a home – it is the very centre of things, a focal point for family life. With many years of proven reserves under the ground within the UK and ample supplies available from all continents of the world, the long term supply of Solid Fuel is guaranteed.



Today, using Solid Fuel to heat your home has never been easier or more convenient. What's more, the comprehensive range of domestic heating appliances – from simple, attractive open fires to advanced inset and freestanding stoves, free-standing boilers and cookers – gives you the flexibility to adapt, and the versatility to control your home heating far into the future.



## COST BENEFITS

On a modern Solid Fuel appliance, Solid Fuel provides excellent value for money. **Most Solid Fuel appliances offer flexibility in performance allowing continuous burning over extended periods at reduced output to keep you home cozy on cold winter nights.**

## CHOICE OF FUEL

Many appliances are multifuel, able to burn housecoal, smokeless coal or wood fuels. Some can burn wood or coal in smokeless zones. The variety of Solid Fuel products available and delivered to your door by your local Approved Coal Merchant means an efficient fire whatever your appliance.

**CONVENIENT  
TO USE AND EASY  
TO CONTROL**

Today's modern Solid Fuel appliances are easy to use and simple to control. The heat output of most appliances can be quickly pre-set to the desired temperature and left alone.



Modern open fires are often known as "all night burners", keeping your home constantly warm and increasing your feeling of comfort and well-being. Boiler models can power radiators and provide domestic hot water at the same time as radiating warmth into the room.

Anthracite gravity feed boilers are fully controllable. The large hopper capacity makes refuelling easy.

They have the power and efficiency to provide hot water as well as heating to even the largest home.

**SOLID FUEL HEATING  
THE HEALTHY  
HEATING OPTION**

Harmful condensation can cause mould growth and ruin the fabric of your home. The common cause of condensation – intermittent heating combined with inadequate ventilation and insulation – is greatly reduced in houses using Solid Fuel heating.

Designed to work economically day and night, Solid Fuel heating ensures the structure of the house never cools completely and the chimney acts as a source of warmth, and natural ventilation. Warmth transmitted through the chimney itself can provide up to 5% more heat in the home – equivalent to an additional radiator.

And what's more Solid Fuel heating is not just healthier for your home – it's healthier for you and your children.

Recent research has shown that children brought up in homes heated with solid fuel fires are half as likely to develop hay fever as those from homes with other forms of domestic heating. There was a similar decrease in the risk of developing allergies such as asthma and eczema. In urban areas of the UK as many as one child in five now suffers from asthma.



Research has also shown that asthma attacks can be triggered by nitrogen dioxide from gas fires and cookers and those least at risk live in homes with Solid Fuel fires.



# Appliance

## Types

### OPEN FIRES



More and more people are opening up their fireplaces to enjoy the warmth and comfort of an open fire. A living fire which becomes the focus of the room and the family.

There are many different styles to choose from and they all offer the flickering flame and cosy glow that only a real fire can provide.

An open fire actually creates a sense of well-being; it is calming, relaxing.

An open fire provides heat for your home by direct radiation, although some fires are available with a convection chamber to circulate warm air around the room.

Your modern open fire, properly fitted and sealed is cleaner, brighter and more fuel efficient than ever before.

Open fires with a compatible back boiler considerably increase the efficiency of your home heating system, provide hot water and can heat up to seven radiators at the same time.

Controllable open fires will stay alight for up to eight hours on one good fuelling and are capable of slowburning through the night, whilst easy slide-out ash pans allow the removal of ash without having to let the fire go out.

Efficient free standing canopy open fires are also available for installation into large inglenook fireplace openings.



### ROOMHEATERS



Roomheaters combine the economy, efficiency and clean simplicity of an enclosed fire with all the comfort and welcoming appeal of a real fire.

Simple to control and fast to react to your heating needs, roomheaters provide radiant heat for direct warmth as well as creating a continuous flow of convected warmth which circulates throughout the room.

Roomheaters come in a wide range of designs, sizes, capacities and finishes.

Models are available for roomheating only or, with various capacities of integral back boilers, can heat up to ten radiators and provide abundant domestic hot water.

There is a wide range of attractive styles and designs to choose from, including freestanding models.

Roomheaters have an easy to empty ash pan to allow ashes to be removed without letting the fire go out.





## COOKERS

Universally acknowledged and respected as the ultimate cooking experience, Solid Fuel Cookers combine classic good looks with the perfect cooking environment.

They not only cook food to perfection, they also keep the kitchen warm, whilst some models provide partial or full central heating as well as a continuous domestic hot water supply.

The concept of the Solid Fuel Cooker is simple. A controllable continuously burning fire in an insulated cast iron shell retains the heat. When you are ready to cook, the heat is readily available so food is gently and evenly cooked allowing it to retain all its full and natural flavour:

Solid Fuel Cookers burn a wide variety of fuels and all have easy to empty ash pans so that the fire need never go out.



## MULTI-FUEL STOVES

Decorative and free-standing, stoves are capable of providing space heating, hot water and central heating.

Whilst the fire is contained behind doors, on many models the doors can be opened while the fire is alight to allow the warmth and glow of a real fire to complement the room. The doors should be closed when a more efficient slow burn is required or when the room is unattended. Attractive yet practical, stoves are available with boilers ranging from those with a small output – for supplying domestic hot water only – to the large output units capable of heating a radiator circuit.



Many stoves are multi-fuel and can burn wood or logs, as well as the full range of Solid Fuels, making them ideal for both urban and country living. There is a very wide range of designs, sizes and finishes to match any interior.

## FREE-STANDING BOILERS

State of the art technology in central heating boilers means there's a model to suit your home's needs perfectly. There are two main types of independent boilers: batch fed and gravity feed. Batch fed models will provide domestic hot water and heat up to six radiators, which makes them ideal for a small house or cottage. Gravity feed boilers incorporate a large hopper which can hold several days' fuel supply depending on demand. Gravity feed boilers burn small sized Anthracite and have an integral hopper above the fire box. The fuel descends on to the fire – fed as required and combustion is assisted by an in-built fan controlled by a thermostat – providing a quick response to demand. Gravity feed boilers are available in a wide range of outputs and sizes which can heat up to twenty radiators in addition to providing abundant domestic hot water.



# Central

## Heating



### AN EVERYDAY LUXURY

Central heating, once considered a luxury, is now an affordable basic requirement in most homes. For the sheer pleasure of its comfort and warmth, Solid Fuel central heating is unbeatable



### A BRIGHTER CHOICE

Solid Fuel central heating provides all your domestic hot water needs, plus heat for as many as 20 radiators. The system may be run from an open fire with a back boiler or from a roomheater, by a multi-fuel stove, an independent boiler or by a gravity feed boiler which feeds itself.

The system you choose depends on what your home needs. What you get is efficient, economic and controllable heating.

### EFFICIENT ECONOMIC HEATING

The running costs of a glass fronted roomheater with full central heating are comparable with those of a conventional gas heating system and less than Economy 7 electricity or LPG\*.



Controlling the heat output of modern Solid Fuel appliances is surprisingly easy and, once set, they may be left alone for long periods. Consumers of Solid Fuel are also in the enviable position of being able to buy exactly how much they want, when they want it with no 'standing charges' (See our leaflet on Conservation of Heat and Power).

*\*Subject to regional variations in fuel prices.*

### RADIATORS



Radiators can be fitted almost anywhere in the house and vary in size and style to match the style of your home. Long, low radiators can be fitted below windows; tall narrow radiators can be installed where space is limited. Some rooms may need double radiators, others just single panel or convector design. All types can be individually controlled by thermostatically operated valves which keep each room automatically at a constant temperature.

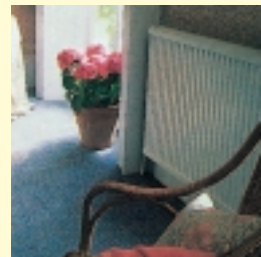
Link

Up

## THE MAGIC OF A REAL COAL FIRE

"Oh how lovely, a real coal fire!" How many times have you said that yourself when you enter a home with an open fire whether fuelled with logs, coal or smokeless fuel glowing

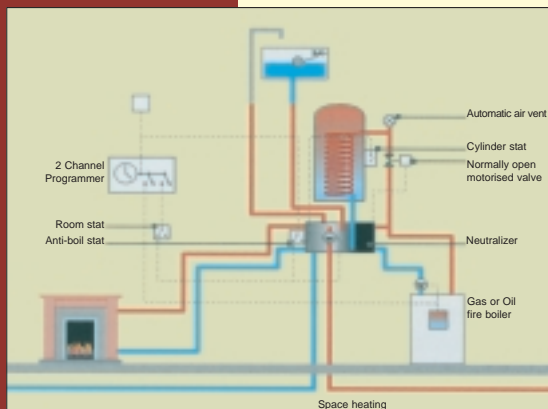
gently in the hearth? There's an indefinable pleasure in the warmth, the sense of comfort and well being you feel that no other central heating system can give you, no matter how efficient it might be.



## LINKED TO YOUR CENTRAL HEATING

Link-up makes it possible to link up your Solid Fuel fire to your central heating system in such a way that you can enjoy the flexibility of improved heating and control your heating costs. Existing gas or oil central heating systems can be adapted or extended. All of the benefits of dual fired heating, coupled with the pleasure of a real fire. What could be better? Like all good ideas, Link-up is really very simple.

A Solid Fuel appliance with a back boiler can be linked up with your existing boiler in such a way that you use one or the other, or both, to provide the heating and hot water you need at any given time.



## HOW LINK-UP WORKS

- 1) An open fire or closed appliance fitted with a back boiler can be linked up with the existing piping system.
- 2) The existing central heating boiler continues to service the system with hot water as and when necessary.
- 3) The radiators, adjusted to the desired temperature, can be supplied by your fire or by the existing boiler or a combination of both.
- 4) Link-up can be installed so that the Solid Fuel appliance heats either or both the hot water cylinder and the radiators.

## FLEXIBLE HEATING

The real advantage of Link-up is its flexibility. Whilst you are enjoying the comfort of your fire, it can take over – automatically – all or part of the heating normally provided by the central heating boiler at no extra cost.

When you are not using your Solid Fuel appliance, the central heating system operates as normal.



*Further*

## Information



The Solid Fuel Association recommends that you only buy your fuel from an Approved Coal Merchant. Telephone 01773 835400 for your Local Coal Merchants. Ask for a copy of the Coal Trade Code.



Building Regulations stipulate that for installation and modification work to heating systems, chimneys and fireplaces, Building Control consent must be obtained unless you use a HETAS approved installer. Ask for the handy guide to the competent persons scheme. Telephone 01684 278170 for a list of local engineers or visit [www.hetas.co.uk](http://www.hetas.co.uk).



**SOLID FUEL ASSOCIATION**

**95 High Street, Clay Cross, Chesterfield, Derbyshire S45 9DZ  
Tel: 01773 835400**

Registered in England No 2895640  
e-mail: [sfa@solidfuel.co.uk](mailto:sfa@solidfuel.co.uk) <http://www.solidfuel.co.uk>  
(Solid Fuel Association Limited) VAT Registered No 645 3041 59